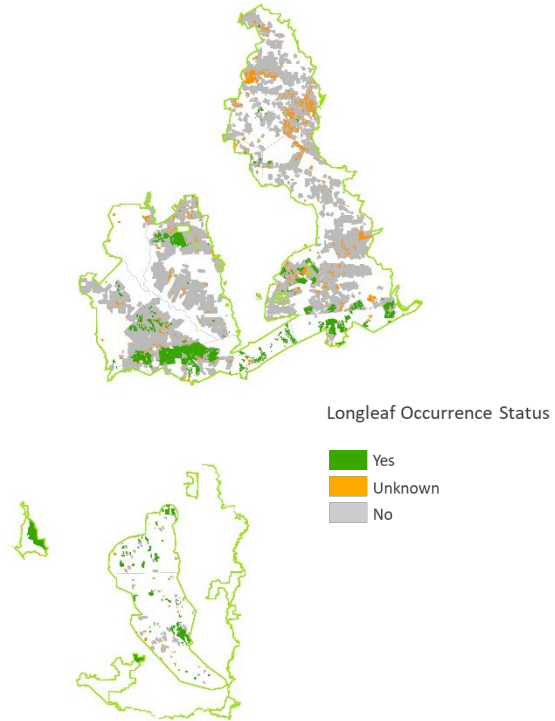


### Overall Summary of Longleaf in the LIT

The LEO GDB includes both existing partner data and new Rapid Assessment (RA) field data. Total longleaf pine in the LIT is summarized below for 4 attributes that are available across most data sources.

Total longleaf pine acres in LEO GDB:

57,806



#### Attributes of Texas LIT longleaf pine sites currently in the LEO GDB.

Attribute		Acres	Percent
Ownership Type	Federal	41,759	72
	State	180	<1
	Local	0	0
	Private Conservation Land	2,044	4
	Private Conservation Easement	1,736	3
	Private - Unprotected	12,087	21
Stand Type	Natural	11,592	20
	Planted	7,871	14
	No Data	38,343	66
Longleaf Dominance	Dominant	36,210	63
	Codominant	9,417	16
	Occasional - Rare	2,464	4
	No Data	9,715	17
Stand Age	Older Mature	27,876	48
	Younger Mature	9,609	17
	Pre Reproductive	7,853	14
	No Data	12,410	21

### Summary of Rapid Assessment Data in the LIT

The Rapid Assessment (RA) provides ground-truthed data on the presence and condition of longleaf pine stands where no similar data exists from other sources. Field data include attributes for canopy, midstory and ground layers that were collected by surveyors trained on the LEO project protocols.

Total longleaf pine acres within  
RA Sites: **9,304**

Survey status of potential longleaf pine sites delineated for Rapid Assessment.

RA Survey Status	Number of Sites	Acres
Longleaf Present	104	9,304
Longleaf Absent	240	16,909
No access <sup>a</sup>	125	5,210
Unvisited <sup>b</sup>	4	124

<sup>a</sup>surveys attempted but sites could not be accessed by road

<sup>b</sup>unvisited, in areas of lower partner priority or outlying areas; still available for supplemental data collection

Stand attributes from Rapid Assessments of longleaf pine in the LIT. Maintain and Improve conditions are primarily derived from America’s Longleaf Restoration Initiative’s Longleaf Pine Maintenance Condition Class Definitions.

Condition Attribute	Maintain (Acres)	Maintain (%)	Improve (Acres)	Improve (%)	No Data (Acres)	No Data (%)
Flat-tops	1,271	14	7,794	84	239	3
Large Longleaf	7,742	83	1,340	14	222	2
Longleaf Stand Age	1,577	17	7,670	82	58	1
Longleaf Canopy Age Classes	3,521	38	5,495	59	289	3
Longleaf Pine Regeneration	1,556	17	7,606	82	142	2
Longleaf Pine Saplings	2,395	26	6,767	73	142	2
Longleaf Pine Basal Area	6,556	70	2,568	28	180	2
Hardwood Canopy Basal Area	8,436	91	654	7	214	2
Midstory Cover	6,207	67	3,097	33	0	0
Fire Tolerant Hardwoods Cover	6,773	73	1,676*	18	856	9
Tall Shrub Cover	4,859	52	4,445	48	0	0
Short Shrub Cover	8,563	92	741	8	0	0
Herbaceous Cover	5,664	61	3,574	38	65	1
Pyrogenic Grass Cover	0	0	0	0	9,304	100
Non-native Grass Cover	0	0	8,947	96	357	4
Invasive Plant Cover	8,698	93	253	3	352	4

\*data includes both improve and restore condition classes

Fire evidence observed on Rapid Assessment Sites with longleaf pine.

Fire Evidence Category	Acres	%
Frequent	3,641	39
Recent, not frequent	110	1
Infrequent	655	7
No evidence	3,676	40
No data	1,222	13

Condition rank assigned by surveyor for Rapid Assessment Sites with longleaf pine.

Condition Rank	Acres	%
Excellent	5,989	64
Good	2,206	24
Fair	782	8
Low	66	1
No Data	261	3