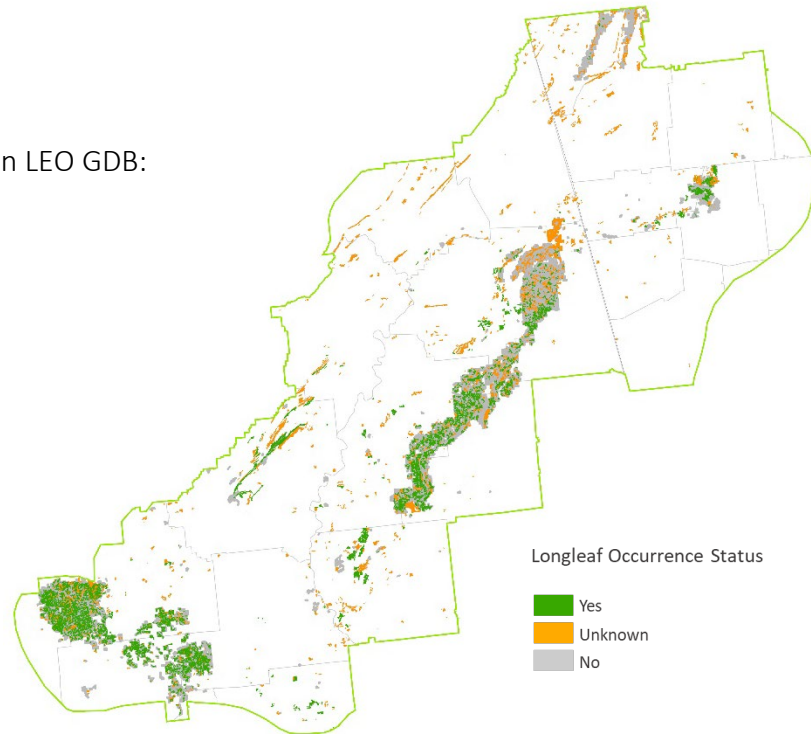


Overall Summary of Longleaf in the LIT

The LEO GDB includes both existing partner data and new Rapid Assessment (RA) field data. Total longleaf pine in the LIT is summarized below for 4 attributes that are available across most data sources.

Total longleaf pine acres in LEO GDB:

142,877



Attributes of Talladega-Mountain Longleaf LIT longleaf pine sites currently in the LEO GDB.

Attribute		Acres	Percent
Ownership Type	Federal	114,194	80
	State	7,017	5
	Local	0	0
	Private Conservation Land	2,017	1
	Private Conservation Easement	1,226	1
	Private - Unprotected	18,423	13
Stand Type	Natural	49,428	35
	Planted	27,432	19
	No Data	66,017	46
Longleaf Dominance	Dominant	118,888	83
	Codominant	16,593	12
	Occasional - Rare	6,685	5
	No Data	711	<1
Stand Age	Older Mature	88,938	62
	Younger Mature	36,205	25
	Pre Reproductive	10,923	8
	No Data	6,811	5

Summary of Rapid Assessment Data in the LIT

The Rapid Assessment (RA) provides ground-truthed data on the presence and condition of longleaf pine stands where no similar data exists from other sources. Field data include attributes for canopy, midstory and ground layers that were collected by surveyors trained on the LEO project protocols.

Total longleaf pine acres within
RA Sites: **22,140**

Survey status of potential longleaf pine sites delineated for Rapid Assessment.

RA Survey Status	Number of Sites	Acres
Longleaf Present	165	22,140
Longleaf Absent	102	10,010
No access ^a	556	36,223
Unvisited ^b	271	26,612

^asurveys attempted but sites could not be accessed by road

^bunvisited, in areas of lower partner priority or outlying areas; still available for supplemental data collection

Stand attributes from Rapid Assessments of longleaf pine in the LIT. Maintain and Improve conditions are primarily derived from America's Longleaf Restoration Initiative's Longleaf Pine Maintenance Condition Class Definitions.

Condition Attribute	Maintain (Acres)	Maintain (%)	Improve (Acres)	Improve (%)	No Data (Acres)	No Data (%)
Flat-tops	793	4	21,347	96	0	0
Large Longleaf	15,320	69	6,821	31	0	0
Longleaf Stand Age	15,293	69	6,847	31	0	0
Longleaf Canopy Age Classes	1,872	8	20,268	92	0	0
Longleaf Pine Regeneration	215	1	21,925	99	0	0
Longleaf Pine Saplings	369	2	21,771	98	0	0
Longleaf Pine Basal Area	13,760	62	8,380	38	0	0
Hardwood Canopy Basal Area	12,672	57	9,469	43	0	0
Midstory Cover	5,782	26	16,358	74	138	1
Fire Tolerant Hardwoods Cover	9,156	41	12,977*	59	7	<1
Tall Shrub Cover	9,764	44	12,376	56	0	0
Short Shrub Cover	17,606	80	4,534	20	0	0
Herbaceous Cover	2,642	12	19,498	88	0	0
Pyrogenic Grass Cover	1,759	8	20,381	92	0	0
Non-native Grass Cover	0	0	22,140*	100	0	0
Invasive Plant Cover	22,140	100	0	0	0	0

*data includes both improve and restore condition classes

Fire evidence observed on Rapid Assessment Sites with longleaf pine.

Fire Evidence Category	Acres	%
Frequent	1,800	8
Recent, not frequent	59	<1
Infrequent	2,957	13
No evidence	17,325	78
No data	0	0

Condition rank assigned by surveyor for Rapid Assessment Sites with longleaf pine.

Condition Rank	Acres	%
Excellent	1,018	5
Good	3,391	15
Fair	17,695	80
Low	36	0
No Data	0	0