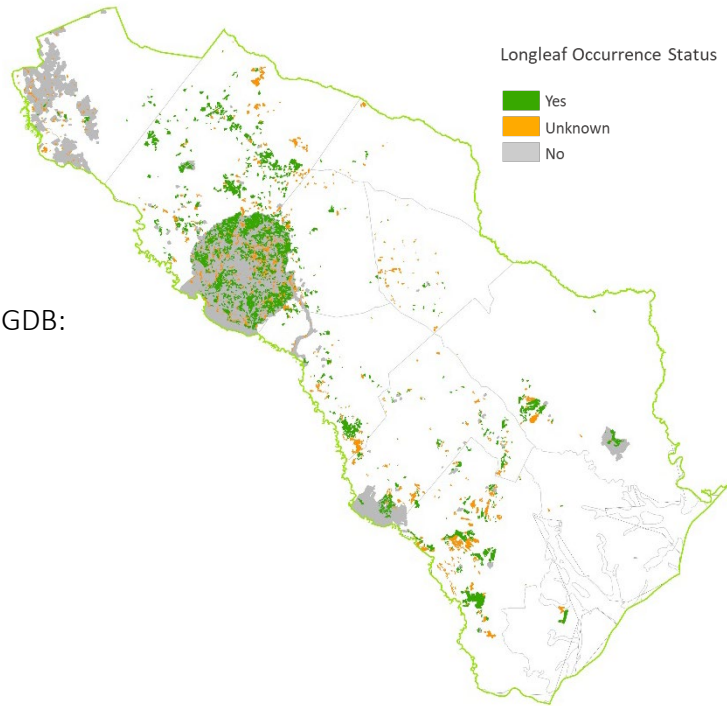


Overall Summary of Longleaf in the LIT

The LEO GDB includes both existing partner data and new Rapid Assessment (RA) field data. Total longleaf pine in the LIT is summarized below for 4 attributes that are available across most data sources.

Total longleaf pine acres in LEO GDB:

111,165



Attributes of SoLo-ACE longleaf pine sites currently in the LEO GDB.

Attribute		Acres	Percent
Ownership Type	Federal	50,584	46
	State	6,892	6
	Local	0	0
	Private Conservation Land	192	<1
	Private Conservation Easement	5,952	5
	Private - Unprotected	47,544	43
Stand Type	Natural	48,591	44
	Planted	33,371	30
	No Data	29,203	26
Longleaf Dominance	Dominant	90,069	81
	Codominant	13,926	13
	Occasional - Rare	4,832	4
	No Data	2,338	2
Stand Age	Older Mature	54,996	49
	Younger Mature	31,232	28
	Pre Reproductive	18,559	17
	No Data	6,377	6

Summary of Rapid Assessment Data in the LIT

The Rapid Assessment (RA) provides ground-truthed data on the presence and condition of longleaf pine stands where no similar data exists from other sources. Field data include attributes for canopy, midstory and ground layers that were collected by surveyors trained on the LEO project protocols.

Total longleaf pine acres within
RA Sites: **55,236**

Survey status of potential longleaf pine sites delineated for Rapid Assessment.

RA Survey Status	Number of Sites	Acres
Longleaf Present	819	55,236
Longleaf Absent	98	4,986
No access ^a	369	22,399
Unvisited ^b	232	10,302

^asurveys attempted but sites could not be accessed by road

^bunvisited, in areas of lower partner priority or outlying areas; still available for supplemental data collection

Stand attributes from Rapid Assessments of longleaf pine in the LIT. Maintain and Improve conditions are primarily derived from America's Longleaf Restoration Initiative's Longleaf Pine Maintenance Condition Class Definitions.

Condition Attribute	Maintain (Acres)	Maintain (%)	Improve (Acres)	Improve (%)	No Data (Acres)	No Data (%)
Flat-tops	23,346	42	27,539	50	4,351	8
Large Longleaf	36,967	67	13,963	25	4,306	8
Longleaf Stand Age	27,147	49	27,930	51	158	<1
Longleaf Canopy Age Classes	25,947	47	25,316	46	3,973	7
Longleaf Pine Regeneration	24,103	44	27,134	49	3,999	7
Longleaf Pine Saplings	24,925	45	25,921	47	4,390	8
Longleaf Pine Basal Area	41,437	75	10,076	18	3,723	7
Hardwood Canopy Basal Area	39,319	71	1,965	4	13,952	25
Midstory Cover	35,391	64	19,706	36	138	<1
Fire Tolerant Hardwoods Cover	38,138	69	7,863*	14	9,235	17
Tall Shrub Cover	33,281	60	21,816	39	138	<1
Short Shrub Cover	51,140	93	3,958	7	138	<1
Herbaceous Cover	20,529	37	34,349	62	358	1
Pyrogenic Grass Cover	18,647	34	26,083	47	10,506	19
Non-native Grass Cover	24,199	44	18590*	34	12,448	23
Invasive Plant Cover	44,174	80	718	1	10,343	19

*data includes both improve and restore condition classes

Fire evidence observed on Rapid Assessment Sites with longleaf pine.

Fire Evidence Category	Acres	%
Frequent	21,387	39
Recent, not frequent	661	1
Infrequent	8,077	15
No evidence	22,304	40
No data	2,807	5

Condition rank assigned by surveyor for Rapid Assessment Sites with longleaf pine.

Condition Rank	Acres	%
Excellent	12,779	23
Good	8,187	15
Fair	21,890	40
Low	5,406	10
No Data	6,975	13