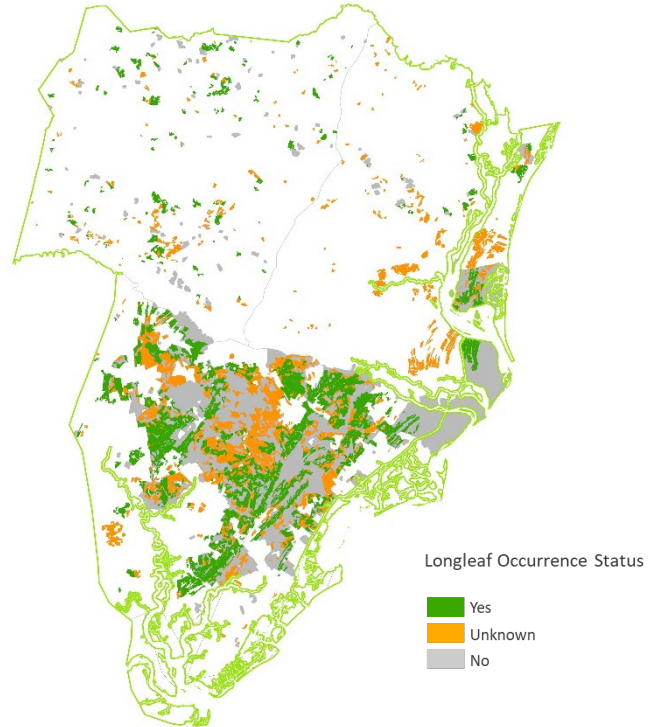


Overall Summary of Longleaf in the LIT

The LEO GDB includes both existing partner data and new Rapid Assessment (RA) field data. Total longleaf pine in the LIT is summarized below for 4 attributes that are available across most data sources.

Total longleaf pine acres in LEO GDB:
109,026



Attributes of Sewee longleaf pine sites currently in the LEO GDB.

Attribute		Acres	Percent
Ownership Type	Federal	82,160	75
	State	4,767	4
	Local	0	0
	Private Conservation Land	4,573	4
	Private Conservation Easement	1,998	2
	Private - Unprotected	15,528	14
Stand Type	Natural	26,591	24
	Planted	9,351	9
	No Data	73,084	67
Longleaf Dominance	Dominant	50,042	46
	Codominant	29,162	27
	Occasional - Rare	3,411	3
	No Data	26,411	24
Stand Age	Older Mature	41,402	38
	Younger Mature	32,214	30
	Pre Reproductive	1,062	1
	No Data	34,348	32

Summary of Rapid Assessment Data in the LIT

The Rapid Assessment (RA) provides ground-truthed data on the presence and condition of longleaf pine stands where no similar data exists from other sources. Field data include attributes for canopy, midstory and ground layers that were collected by surveyors trained on the LEO project protocols.

Total longleaf pine acres within
RA Sites: **20,026**

Survey status of potential longleaf pine sites delineated for Rapid Assessment.

RA Survey Status	Number of Sites	Acres
Longleaf Present	219	20,026
Longleaf Absent	145	9,052
No access ^a	250	16,063
Unvisited ^b	164	13,062

^asurveys attempted but sites could not be accessed by road

^bunvisited, in areas of lower partner priority or outlying areas; still available for supplemental data collection

Stand attributes from Rapid Assessments of longleaf pine in the LIT. Maintain and Improve conditions are primarily derived from America’s Longleaf Restoration Initiative’s Longleaf Pine Maintenance Condition Class Definitions.

Condition Attribute	Maintain (Acres)	Maintain (%)	Improve (Acres)	Improve (%)	No Data (Acres)	No Data (%)
Flat-tops	11,983	60	8,042	40	0	0
Large Longleaf	16,986	85	3,040	15	0	0
Longleaf Stand Age	12,278	61	7,748	39	0	0
Longleaf Canopy Age Classes	17,173	86	2,853	14	0	0
Longleaf Pine Regeneration	7,917	40	12,109	60	0	0
Longleaf Pine Saplings	8,759	44	11,267	56	0	0
Longleaf Pine Basal Area	18,162	91	1,864	9	0	0
Hardwood Canopy Basal Area	19,628	98	398	2	0	0
Midstory Cover	13,641	68	6,385	32	0	0
Fire Tolerant Hardwoods Cover	19,640	98	385	2	0	0
Tall Shrub Cover	8,118	41	11,907	59	0	0
Short Shrub Cover	17,267	86	2,759	14	0	0
Herbaceous Cover	10,821	54	9,205	46	0	0
Pyrogenic Grass Cover	3,590	18	16,435	82	0	0
Non-native Grass Cover	0	0	20,026	100	0	0
Invasive Plant Cover	19,935	100	91	<1	0	0

*data includes both improve and restore condition classes

Fire evidence observed on Rapid Assessment Sites with longleaf pine.

Fire Evidence Category	Acres	%
Frequent	12,530	63
Recent, not frequent	0	0
Infrequent	812	4
No evidence	5,962	30
No data	722	4

Condition rank assigned by surveyor for Rapid Assessment Sites with longleaf pine.

Condition Rank	Acres	%
Excellent	4,458	22
Good	8,040	40
Fair	5,226	26
Low	2,303	11
No Data	0	0