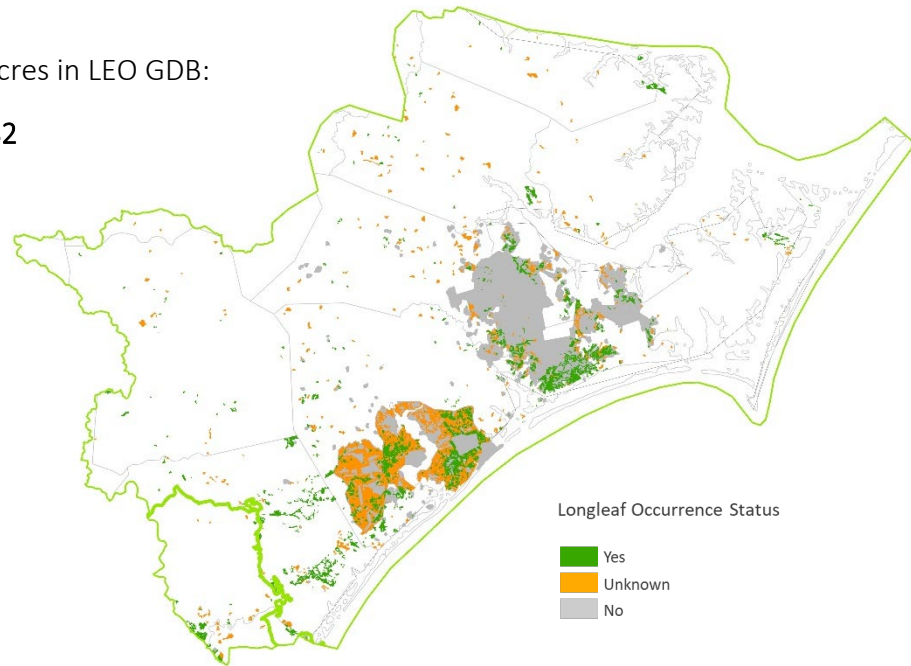


Overall Summary of Longleaf in the LIT

The LEO GDB includes both existing partner data and new Rapid Assessment (RA) field data. Total longleaf pine in the LIT is summarized below for 4 attributes that are available across most data sources.

Total longleaf pine acres in LEO GDB:

54,682



Attributes of Onslow Bight longleaf pine sites currently in the LEO GDB.

Attribute		Acres	Percent
Ownership Type	Federal	33,903	62
	State	9,253	17
	Local	0	0
	Private Conservation Land	2,229	4
	Private Conservation Easement	144	<1
	Private - Unprotected	9,154	17
Stand Type	Natural	23,022	42
	Planted	11,717	21
	No Data	19,944	36
Longleaf Dominance	Dominant	37,575	69
	Codominant	13,807	25
	Occasional - Rare	3,062	6
	No Data	238	<1
Stand Age	Older Mature	23,085	42
	Younger Mature	13,802	25
	Pre Reproductive	5,216	10
	No Data	12,579	23

Summary of Rapid Assessment Data in the LIT

The Rapid Assessment (RA) provides ground-truthed data on the presence and condition of longleaf pine stands where no similar data exists from other sources. Field data include attributes for canopy, midstory and ground layers that were collected by surveyors trained on the LEO project protocols.

Total longleaf pine acres within
RA Sites: **10,566**

Survey status of potential longleaf pine sites delineated for Rapid Assessment.

RA Survey Status	Number of Sites	Acres
Longleaf Present	329	10,566
Longleaf Absent	105	4,943
No access ^a	84	4,272
Unvisited ^b	199	9,691

^asurveys attempted but sites could not be accessed by road

^bunvisited, in areas of lower partner priority or outlying areas; still available for supplemental data collection

Stand attributes from Rapid Assessments of longleaf pine in the LIT. Maintain and Improve conditions are primarily derived from America’s Longleaf Restoration Initiative’s Longleaf Pine Maintenance Condition Class Definitions.

Condition Attribute	Maintain (Acres)	Maintain (%)	Improve (Acres)	Improve (%)	No Data (Acres)	No Data (%)
Flat-tops	3,021	29	7,313	69	232	2
Large Longleaf	4,744	45	5,590	53	232	2
Longleaf Stand Age	1,469	14	8,830	84	267	3
Longleaf Canopy Age Classes	6,228	59	4,106	39	232	2
Longleaf Pine Regeneration	3,707	35	6,626	63	232	2
Longleaf Pine Saplings	3,983	38	6,351	60	232	2
Longleaf Pine Basal Area	6,331	60	4,003	38	232	2
Hardwood Canopy Basal Area	10,291	97	43	<1	232	2
Midstory Cover	6,125	58	4,208	40	232	2
Fire Tolerant Hardwoods Cover	9,636	91	693*	7	237	2
Tall Shrub Cover	4,813	46	5,521	52	232	2
Short Shrub Cover	6,382	60	3,952	37	232	2
Herbaceous Cover	1,805	17	8,529	81	232	2
Pyrogenic Grass Cover	3,904	37	6,323	60	339	3
Non-native Grass Cover	0	0	10,334*	98	232	2
Invasive Plant Cover	10,154	96	105	1	307	3

*data includes both improve and restore condition classes

Fire evidence observed on Rapid Assessment Sites with longleaf pine.

Fire Evidence Category	Acres	%
Frequent	1,494	14
Recent, not frequent	299	3
Infrequent	1,699	16
No evidence	6,874	65
No data	200	2

Condition rank assigned by surveyor for Rapid Assessment Sites with longleaf pine.

Condition Rank	Acres	%
Excellent	287	3
Good	818	8
Fair	3,293	31
Low	5,936	56
No Data	232	2