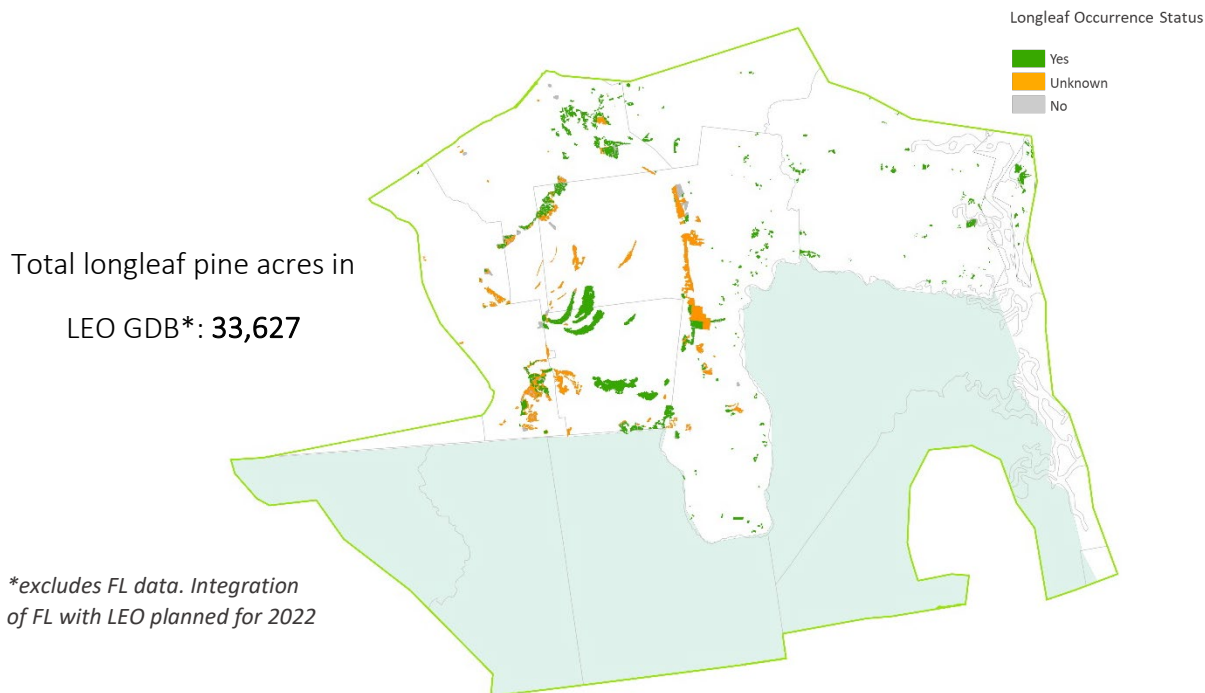


Overall Summary of Longleaf in the LIT

The LEO GDB includes both existing partner data and new Rapid Assessment (RA) field data. Total longleaf pine in the LIT is summarized below for 4 attributes that are available across most data sources.



Attributes of O2 LIT longleaf pine sites currently in the LEO GDB (excludes Florida).

Attribute		Acres	Percent
Ownership Type	Federal	23,473	70
	State	4,803	14
	Local	0	0
	Private Conservation Land	120	<1
	Private Conservation Easement	21	<1
	Private - Unprotected	5,210	15
Stand Type	Natural	6,879	20
	Planted	4,763	14
	No Data	21,986	65
Longleaf Dominance	Dominant	11,092	33
	Codominant	6,223	19
	Occasional - Rare	12,693	38
	No Data	3,620	11
Stand Age	Older Mature	55	<1
	Younger Mature	21	<1
	Pre Reproductive	320	1
	No Data	33,232	99

Summary of Rapid Assessment Data in the LIT

The Rapid Assessment (RA) provides ground-truthed data on the presence and condition of longleaf pine stands where no similar data exists from other sources. Field data include attributes for canopy, midstory and ground layers that were collected by surveyors trained on the LEO project protocols.

Total longleaf pine acres within
RA Sites: **410**

Survey status of potential longleaf pine sites delineated for Rapid Assessment.

RA Survey Status	Number of Sites	Acres
Longleaf Present	12	410
Longleaf Absent	11	1,024
No access ^a	27	3,662
Unvisited ^b	3	142

^asurveys attempted but sites could not be accessed by road

^bunvisited, in areas of lower partner priority or outlying areas; still available for supplemental data collection

Stand attributes from Rapid Assessments of longleaf pine in the LIT. Maintain and Improve conditions are primarily derived from America’s Longleaf Restoration Initiative’s Longleaf Pine Maintenance Condition Class Definitions.

Condition Attribute	Maintain (Acres)	Maintain (%)	Improve (Acres)	Improve (%)	No Data (Acres)	No Data (%)
Flat-tops	0	0	367	90	43	10
Large Longleaf	32	8	355	87	22	5
Longleaf Stand Age	55	13	341	83	14	4
Longleaf Canopy Age Classes	0	0	410	100	0	0
Longleaf Pine Regeneration	9	2	401	98	0	0
Longleaf Pine Saplings	315	77	95	23	0	0
Longleaf Pine Basal Area	0	0	267	65	143	35
Hardwood Canopy Basal Area	120	29	0	0	289	71
Midstory Cover	398	97	12	3	0	0
Fire Tolerant Hardwoods Cover	367	90	0	0	43	10
Tall Shrub Cover	347	85	63	15	0	0
Short Shrub Cover	92	22	318	78	0	0
Herbaceous Cover	23	6	365	89	22	5
Pyrogenic Grass Cover	20	5	238	58	153	37
Non-native Grass Cover	0	0	113	28	296	72
Invasive Plant Cover	171	42	0	0	239	58

*data includes both improve and restore condition classes

Fire evidence observed on Rapid Assessment Sites with longleaf pine.

Fire Evidence Category	Acres	%
Frequent	0	0
Recent, not frequent	0	0
Infrequent	0	0
No evidence	410	100
No data	0	0

Condition rank assigned by surveyor for Rapid Assessment Sites with longleaf pine.

Condition Rank	Acres	%
Excellent	0	0
Good	213	52
Fair	100	24
Low	96	24
No Data	0	0