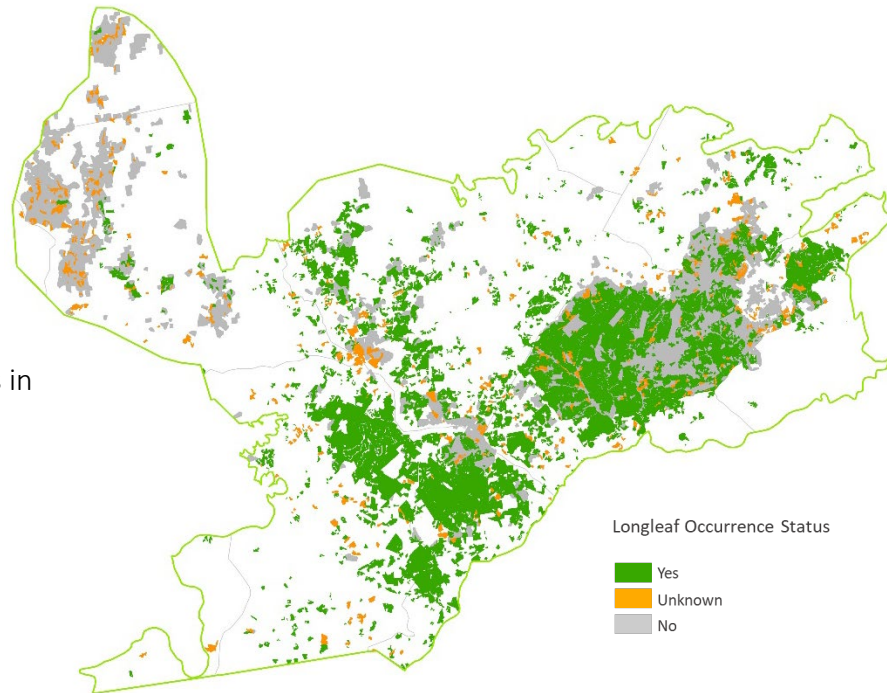


Overall Summary of Longleaf in the LIT

The LEO GDB includes both existing partner data and new Rapid Assessment (RA) field data. Total longleaf pine in the LIT is summarized below for 4 attributes that are available across most data sources.

Total longleaf pine acres in
LEO GDB:
218,935



Attributes of North Carolina Sandhills longleaf pine sites currently in the LEO GDB.

Attribute		Acres	Percent
Ownership Type	Federal	86,894	40
	State	67,105	31
	Local	1,866	1
	Private Conservation Land	8,176	4
	Private Conservation Easement	5,909	3
	Private - Unprotected	48,985	22
Stand Type	Natural	85,809	39
	Planted	31,262	14
	No Data	101,863	47
Longleaf Dominance	Dominant	174,727	80
	Codominant	20,009	9
	Occasional - Rare	8,281	4
	No Data	15,918	7
Stand Age	Older Mature	25,412	12
	Younger Mature	18,127	8
	Pre Reproductive	18,836	9
	No Data	156,560	72

Summary of Rapid Assessment Data in the LIT

The Rapid Assessment (RA) provides ground-truthed data on the presence and condition of longleaf pine stands where no similar data exists from other sources. Field data include attributes for canopy, midstory and ground layers that were collected by surveyors trained on the LEO project protocols.

Total longleaf pine acres within
RA Sites: **40,748**

Survey status of potential longleaf pine sites delineated for Rapid Assessment.

RA Survey Status	Number of Sites	Acres
Longleaf Present	721	40,748
Longleaf Absent	69	4,324
No access ^a	111	5,528
Unvisited ^b	138	7,636

^asurveys attempted but sites could not be accessed by road

^bunvisited, in areas of lower partner priority or outlying areas; still available for supplemental data collection

Stand attributes from Rapid Assessments of longleaf pine in the LIT. Maintain and Improve conditions are primarily derived from America’s Longleaf Restoration Initiative’s Longleaf Pine Maintenance Condition Class Definitions.

Condition Attribute	Maintain (Acres)	Maintain (%)	Improve (Acres)	Improve (%)	No Data (Acres)	No Data (%)
Flat-tops	20,483	50	18,742	46	1,523	4
Large Longleaf	26,708	66	12,518	31	1,523	4
Longleaf Stand Age	23,249	57	15,986	39	1,514	4
Longleaf Canopy Age Classes	27,025	66	12,120	30	1,602	4
Longleaf Pine Regeneration	8,012	20	30,929	76	1,808	4
Longleaf Pine Saplings	10,419	26	28,463	70	1,866	5
Longleaf Pine Basal Area	24,735	61	14,491	36	1,523	4
Hardwood Canopy Basal Area	36,772	90	2,454	6	1,523	4
Midstory Cover	25,847	63	13,387	33	1,514	4
Fire Tolerant Hardwoods Cover	29,366	72	9,522*	23	1,860	5
Tall Shrub Cover	22,834	56	16,401	40	1,514	4
Short Shrub Cover	32,902	81	6,333	16	1,514	4
Herbaceous Cover	15,502	38	23,732	58	1,514	4
Pyrogenic Grass Cover	19,468	48	19,472	48	1,808	4
Non-native Grass Cover	0	0	38,736*	95	2,013	5
Invasive Plant Cover	37,283	91	1,307	3	2,158	5

*data includes both improve and restore condition classes

Fire evidence observed on Rapid Assessment Sites with longleaf pine.

Fire Evidence Category	Acres	%
Frequent	11,888	29
Recent, not frequent	2,474	6
Infrequent	5,287	13
No evidence	20,075	49
No data	1,024	3

Condition rank assigned by surveyor for Rapid Assessment Sites with longleaf pine.

Condition Rank	Acres	%
Excellent	6,734	17
Good	8,134	20
Fair	11,195	27
Low	13,162	32
No Data	1,523	4