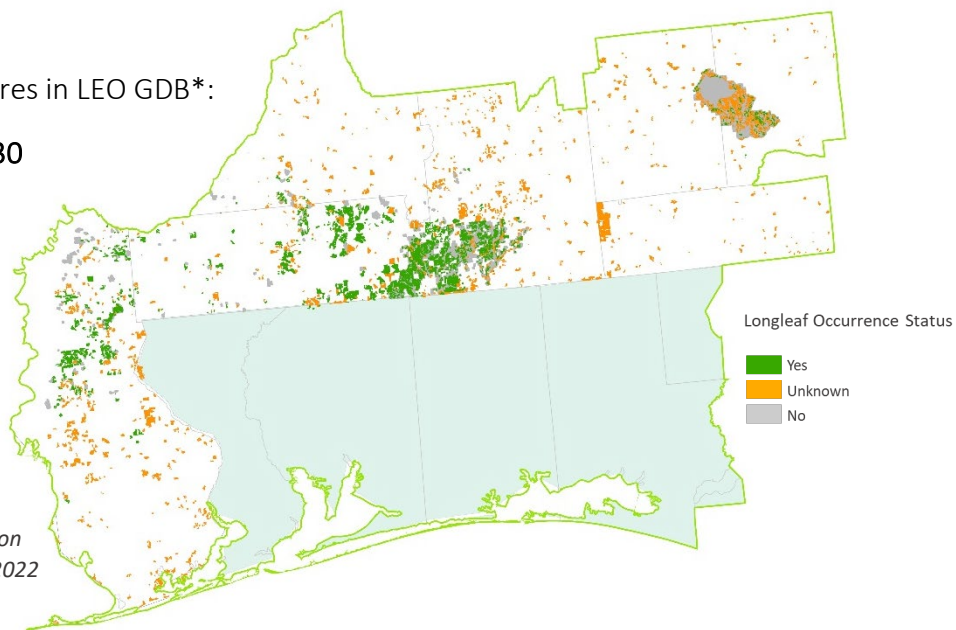


### Overall Summary of Longleaf in the LIT

The LEO GDB includes both existing partner data and new Rapid Assessment (RA) field data. Total longleaf pine in the LIT is summarized below for 4 attributes that are available across most data sources.

Total longleaf pine acres in LEO GDB\*:

**105,630**



Attributes of GCPEP longleaf pine sites currently in the LEO GDB (excludes Florida).

Attribute		Acres	Percent
Ownership Type	Federal	47,900	45
	State	3,705	4
	Local	426	<1
	Private Conservation Land	1,304	1
	Private Conservation Easement	284	<1
	Private - Unprotected	52,010	49
Stand Type	Natural	54,678	52
	Planted	13,778	13
	No Data	37,174	35
Longleaf Dominance	Dominant	87,648	83
	Codominant	6,480	6
	Occasional - Rare	1,523	1
	No Data	9,978	9
Stand Age	Older Mature	54,151	51
	Younger Mature	21,551	20
	Pre Reproductive	17,378	16
	No Data	12,550	12

### Summary of Rapid Assessment Data in the LIT

The Rapid Assessment (RA) provides ground-truthed data on the presence and condition of longleaf pine stands where no similar data exists from other sources. Field data include attributes for canopy, midstory and ground layers that were collected by surveyors trained on the LEO project protocols.

Total longleaf pine acres within  
RA Sites: **53,710**

Survey status of potential longleaf pine sites delineated for Rapid Assessment.

RA Survey Status	Number of Sites	Acres
Longleaf Present	497	53,710
Longleaf Absent	144	10,404
No access <sup>a</sup>	312	25,937
Unvisited <sup>b</sup>	1,061	69,413

<sup>a</sup>surveys attempted but sites could not be accessed by road

<sup>b</sup>unvisited, in areas of lower partner priority or outlying areas; still available for supplemental data collection

Stand attributes from Rapid Assessments of longleaf pine in the LIT. Maintain and Improve conditions are primarily derived from America’s Longleaf Restoration Initiative’s Longleaf Pine Maintenance Condition Class Definitions.

Condition Attribute	Maintain (Acres)	Maintain (%)	Improve (Acres)	Improve (%)	No Data (Acres)	No Data (%)
Flat-tops	19,334	36	29,879	56	4,497	8
Large Longleaf	25,521	48	23,510	44	4,678	9
Longleaf Stand Age	22,475	42	26,754	50	4,482	8
Longleaf Canopy Age Classes	9,336	17	39,694	74	4,680	9
Longleaf Pine Regeneration	4,188	8	44,415	83	5,107	10
Longleaf Pine Saplings	20,355	38	28,276	53	5,079	9
Longleaf Pine Basal Area	34,308	64	8,529	16	10,873	20
Hardwood Canopy Basal Area	48,083	90	753	1	4,874	9
Midstory Cover	38,792	72	10,436	19	4,482	8
Fire Tolerant Hardwoods Cover	45,159	84	876*	2	7,675	14
Tall Shrub Cover	23,194	43	26,034	48	4,482	8
Short Shrub Cover	22,098	41	26,632	50	4,981	9
Herbaceous Cover	24,906	46	23,955	45	4,849	9
Pyrogenic Grass Cover	21,856	41	26,929	50	4,925	9
Non-native Grass Cover	39,501	74	8,064*	15	6,145	11
Invasive Plant Cover	48,502	90	62	0	5,146	10

\*data includes both improve and restore condition classes

Fire evidence observed on Rapid Assessment Sites with longleaf pine.

Fire Evidence Category	Acres	%
Frequent	29,429	55
Recent, not frequent	5,260	10
Infrequent	5,550	10
No evidence	8,438	16
No data	5,033	9

Condition rank assigned by surveyor for Rapid Assessment Sites with longleaf pine.

Condition Rank	Acres	%
Excellent	9,333	17
Good	24,790	46
Fair	13,416	25
Low	655	1
No Data	5,516	10