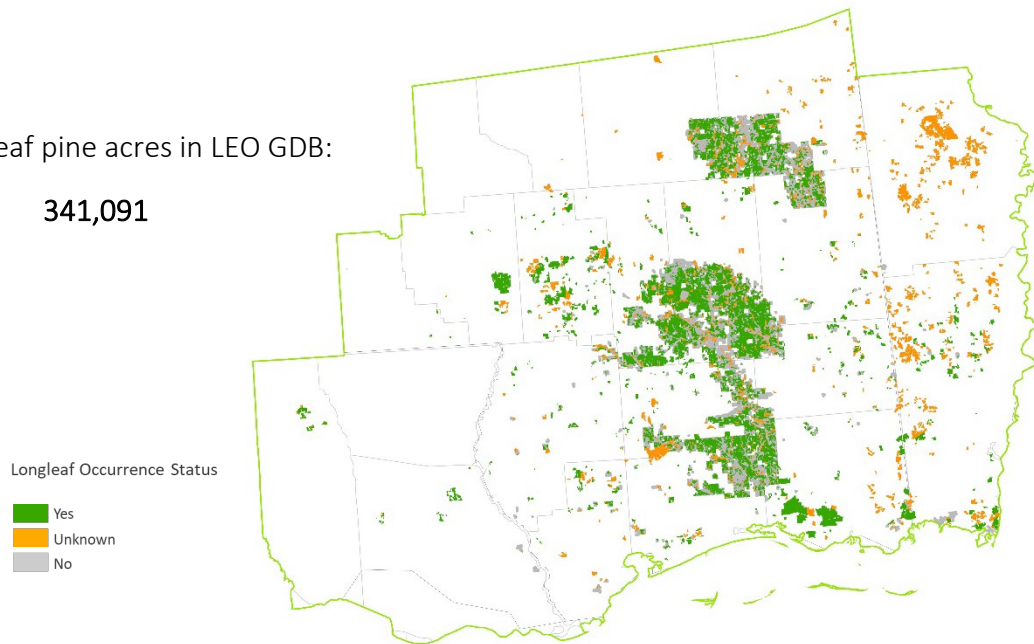


Overall Summary of Longleaf in the LIT

The LEO GDB includes both existing partner data and new Rapid Assessment (RA) field data. Total longleaf pine in the LIT is summarized below for 4 attributes that are available across most data sources.

Total longleaf pine acres in LEO GDB:

341,091



Attributes of Desoto-Camp Shelby longleaf pine sites currently in the LEO GDB.

Attribute		Acres	Percent
Ownership Type	Federal	260,206	76
	State	12,034	4
	Local	59	<1
	Private Conservation Land	3,492	1
	Private Conservation Easement	1,684	<1
	Private - Unprotected	63,617	19
Stand Type	Natural	127,048	37
	Planted	62,331	18
	No Data	151,713	44
Longleaf Dominance	Dominant	285,013	84
	Codominant	34,530	10
	Occasional - Rare	12,934	4
	No Data	8,613	3
Stand Age	Older Mature	182,496	54
	Younger Mature	90,544	27
	Pre Reproductive	27,839	8
	No Data	40,212	12

Summary of Rapid Assessment Data in the LIT

The Rapid Assessment (RA) provides ground-truthed data on the presence and condition of longleaf pine stands where no similar data exists from other sources. Field data include attributes for canopy, midstory and ground layers that were collected by surveyors trained on the LEO project protocols.

Total longleaf pine acres within
RA Sites: **69,846**

Survey status of potential longleaf pine sites delineated for Rapid Assessment.

RA Survey Status	Number of Sites	Acres
Longleaf Present	707	69,846
Longleaf Absent	200	15,754
No access ^a	229	25,292
Unvisited ^b	692	89,817

^asurveys attempted but sites could not be accessed by road

^bunvisited, in areas of lower partner priority or outlying areas; still available for supplemental data collection

Stand attributes from Rapid Assessments of longleaf pine in the LIT. Maintain and Improve conditions are primarily derived from America's Longleaf Restoration Initiative's Longleaf Pine Maintenance Condition Class Definitions.

Condition Attribute	Maintain (Acres)	Maintain (%)	Improve (Acres)	Improve (%)	No Data (Acres)	No Data (%)
Flat-tops	19,665	28	43,936	63	6,245	9
Large Longleaf	30,936	44	31,863	46	7,047	10
Longleaf Stand Age	19,965	29	43,981	63	5,899	8
Longleaf Canopy Age Classes	27,143	39	36,425	52	6,279	9
Longleaf Pine Regeneration	7,407	11	56,065	80	6,375	9
Longleaf Pine Saplings	1,743	2	14,084	20	54,019	77
Longleaf Pine Basal Area	37,018	53	26,753	38	6,075	9
Hardwood Canopy Basal Area	63,187	90	403	1	6,256	9
Midstory Cover	48,372	69	15,575	22	5,899	8
Fire Tolerant Hardwoods Cover	58,873	84	3,246*	5	7,727	11
Tall Shrub Cover	27,466	39	36,481	52	5,899	8
Short Shrub Cover	50,242	72	13,705	20	5,899	8
Herbaceous Cover	28,920	41	35,027	50	5,899	8
Pyrogenic Grass Cover	29,826	43	34,110	49	5,910	8
Non-native Grass Cover	61,074	87	2,384*	3	6,388	9
Invasive Plant Cover	51,138	73	12,429	18	6,279	9

*data includes both improve and restore condition classes

Fire evidence observed on Rapid Assessment Sites with longleaf pine.

Fire Evidence Category	Acres	%
Frequent	20,747	30
Recent, not frequent	1,712	2
Infrequent	17,566	25
No evidence	23,914	34
No data	5,907	8

Condition rank assigned by surveyor for Rapid Assessment Sites with longleaf pine.

Condition Rank	Acres	%
Excellent	7,372	11
Good	25,556	37
Fair	19,125	27
Low	11,654	17
No Data	6,139	9