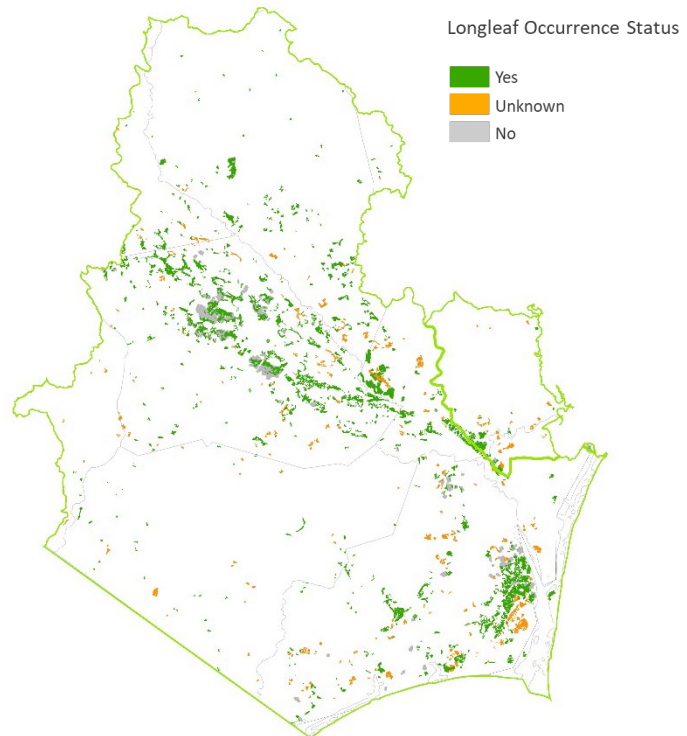


### Overall Summary of Longleaf in the LIT

The LEO GDB includes both existing partner data and new Rapid Assessment (RA) field data. Total longleaf pine in the LIT is summarized below for 4 attributes that are available across most data sources.

Total longleaf pine acres in LEO GDB:

**68,528**



Attributes of Cape Fear Arch longleaf pine sites currently in the LEO GDB.

Attribute		Acres	Percent
Ownership Type	Federal	872	1
	State	19,080	28
	Local	14	0
	Private Conservation Land	6,592	10
	Private Conservation Easement	7,153	10
	Private – Unprotected	34,817	51
Stand Type	Natural	29,539	43
	Planted	27,996	41
	No Data	10,993	16
Longleaf Dominance	Dominant	44,794	65
	Codominant	12,213	18
	Occasional – Rare	6,840	10
	No Data	4,682	7
Stand Age	Older Mature	15,467	23
	Younger Mature	20,947	31
	Pre Reproductive	20,391	30
	No Data	11,724	17

## Summary of Rapid Assessment Data in the LIT

The Rapid Assessment (RA) provides ground-truthed data on the presence and condition of longleaf pine stands where no similar data exists from other sources. Field data include attributes for canopy, midstory and ground layers that were collected by surveyors trained on the LEO project protocols.

Total longleaf pine acres within  
RA Sites: **30,922**

Survey status of potential longleaf pine sites delineated for Rapid Assessment.

RA Survey Status	Number of Sites	Acres
Longleaf Present	779	30,922
Longleaf Absent	68	3,548
No access <sup>a</sup>	99	5,355
Unvisited <sup>b</sup>	239	11,366

<sup>a</sup>surveys attempted but sites could not be accessed by road

<sup>b</sup>unvisited, in areas of lower partner priority or outlying areas; still available for supplemental data collection

Stand attributes from Rapid Assessments of longleaf pine in the LIT. Maintain and Improve conditions are primarily derived from America's Longleaf Restoration Initiative's Longleaf Pine Maintenance Condition Class Definitions.

Condition Attribute	Maintain (Acres)	Maintain (%)	Improve (Acres)	Improve (%)	No Data (Acres)	No Data (%)
Flat-tops	7,102	23	23,295	75	525	2
Large Longleaf	13,327	43	17,107	55	488	2
Longleaf Stand Age	8,915	29	21,464	69	543	2
Longleaf Canopy Age Classes	17,173	56	13,203	43	546	2
Longleaf Pine Regeneration	9,168	30	21,238	69	516	2
Longleaf Pine Saplings	9,973	32	20,433	66	516	2
Longleaf Pine Basal Area	17,973	58	12,425	40	525	2
Hardwood Canopy Basal Area	29,990	97	443	1	488	2
Midstory Cover	23,442	76	6,992	23	488	2
Fire Tolerant Hardwoods Cover	27,399	89	3,016*	10	507	2
Tall Shrub Cover	16,672	54	13,762	45	488	2
Short Shrub Cover	23,538	76	6,895	22	488	2
Herbaceous Cover	14,338	46	16,025	52	560	2
Pyrogenic Grass Cover	15,370	50	14,965	48	588	2
Non-native Grass Cover	0	0	29,270*	95	1,652	5
Invasive Plant Cover	29,045	94	1,677*	5	1,646	5

\*data includes both improve and restore condition classes

Fire evidence observed on Rapid Assessment Sites with longleaf pine.

Fire Evidence Category	Acres	%
Frequent	10,097	33
Recent, not frequent	1,182	4
Infrequent	5,305	17
No evidence	13,866	45
No data	472	2

Condition rank assigned by surveyor for Rapid Assessment Sites with longleaf pine.

Condition Rank	Acres	%
Excellent	2,169	7
Good	7,209	23
Fair	10,209	33
Low	10,789	35
No Data	548	2