

Overall Summary of Longleaf in the LIT

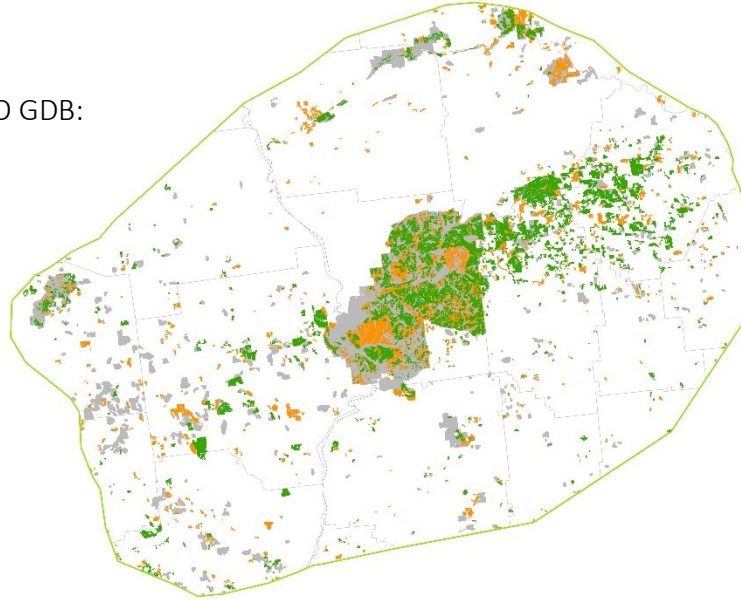
The LEO GDB includes both existing partner data and new Rapid Assessment (RA) field data. Total longleaf pine in the LIT is summarized below for 4 attributes that are available across most data sources.

Total longleaf pine acres in LEO GDB:

133,840

Longleaf Occurrence Status

- Yes
- Unknown
- No



Attributes of CFLCP longleaf pine sites currently in the LEO GDB.

Attribute		Acres	Percent
Ownership Type	Federal	52,873	40
	State	14,105	11
	Local	0	0
	Private Conservation Land	10,368	8
	Private Conservation Easement	7,326	5
	Private - Unprotected	49,169	37
Stand Type	Natural	79,286	59
	Planted	48,051	36
	No Data	6,503	5
Longleaf Dominance	Dominant	54,981	41
	Codominant	24,957	19
	Occasional - Rare	19,594	15
	No Data	34,309	26
Stand Age	Older Mature	18,272	14
	Younger Mature	24,420	18
	Pre Reproductive	18,433	14
	No Data	72,716	54

Summary of Rapid Assessment Data in the LIT

The Rapid Assessment (RA) provides ground-truthed data on the presence and condition of longleaf pine stands where no similar data exists from other sources. Field data include attributes for canopy, midstory and ground layers that were collected by surveyors trained on the LEO project protocols.

Total longleaf pine acres within
RA Sites: **64,197**

Survey status of potential longleaf pine sites delineated for Rapid Assessment.

RA Survey Status	Number of Sites	Acres
Longleaf Present	978	64,197
Longleaf Absent	604	38,393
No access ^a	806	39,406
Unvisited ^b	138	9,790

^asurveys attempted but sites could not be accessed by road

^bunvisited, in areas of lower partner priority or outlying areas; still available for supplemental data collection

Stand attributes from Rapid Assessments of longleaf pine in the LIT. Maintain and Improve conditions are primarily derived from America’s Longleaf Restoration Initiative’s Longleaf Pine Maintenance Condition Class Definitions.

Condition Attribute	Maintain (Acres)	Maintain (%)	Improve (Acres)	Improve (%)	No Data (Acres)	No Data (%)
Flat-tops	13,305	21	45,858	71	5,035	8
Large Longleaf	21,706	34	37,278	58	5,214	8
Longleaf Stand Age	17,384	27	41,694	65	5,119	8
Longleaf Canopy Age Classes	17,069	27	41,994	65	5,134	8
Longleaf Pine Regeneration	9,351	15	49,958	78	4,888	8
Longleaf Pine Saplings	16,148	25	43,015	67	5,035	8
Longleaf Pine Basal Area	20,628	32	38,535	60	5,035	8
Hardwood Canopy Basal Area	52,337	82	6,685	10	5,175	8
Midstory Cover	39,452	61	19,710	31	5,035	8
Fire Tolerant Hardwoods Cover	48,777	76	10,173*	16	5,248	8
Tall Shrub Cover	27,193	42	31,970	50	5,035	8
Short Shrub Cover	44,603	69	14,560	23	5,035	8
Herbaceous Cover	26,705	42	32,458	51	5,035	8
Pyrogenic Grass Cover	3,929	6	55,234	86	5,035	8
Non-native Grass Cover	56,259	88	2,747	4	5,191	8
Invasive Plant Cover	58,842	92	165	0	5,191	8

*data includes both improve and restore condition classes

Fire evidence observed on Rapid Assessment Sites with longleaf pine.

Fire Evidence Category	Acres	%
Frequent	13,423	21
Recent, not frequent	5,220	8
Infrequent	8,340	13
No evidence	33,298	52
No data	3,916	6

Condition rank assigned by surveyor for Rapid Assessment Sites with longleaf pine.

Condition Rank	Acres	%
Excellent	925	1
Good	21,788	34
Fair	22,656	35
Low	13,794	21
No Data	5,035	8