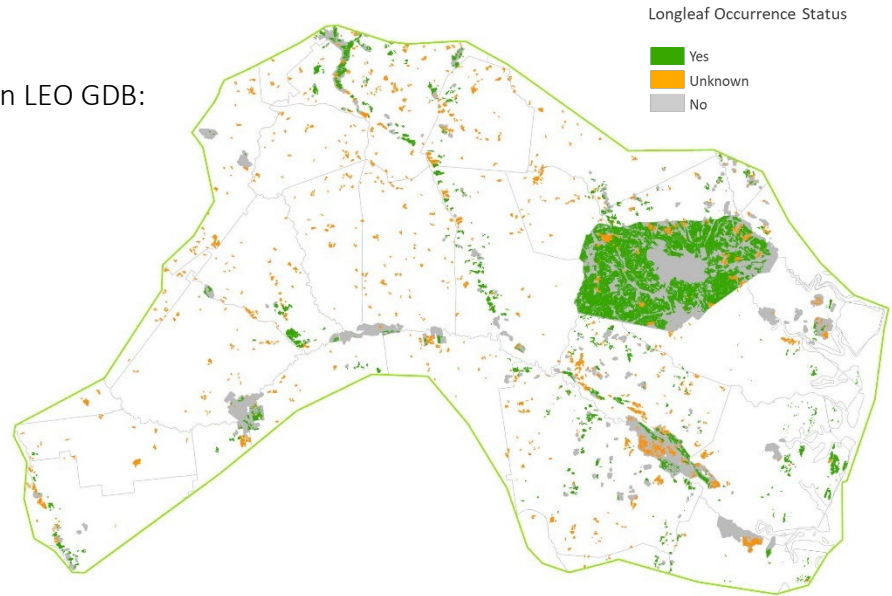


Overall Summary of Longleaf in the LIT

The LEO GDB includes both existing partner data and new Rapid Assessment (RA) field data. Total longleaf pine in the LIT is summarized below for 4 attributes that are available across most data sources.

Total longleaf pine acres in LEO GDB:

195,008



Attributes of Altamaha/Ft. Stewart longleaf pine sites currently in the LEO GDB.

Attribute		Acres	Percent
Ownership Type	Federal	140,623	72
	State	16,215	8
	Local	44	<1
	Private Conservation Land	1,042	1
	Private Conservation Easement	4,033	2
	Private - Unprotected	33,052	17
Stand Type	Natural	173,242	89
	Planted	20,559	11
	No Data	1,207	<1
Longleaf Dominance	Dominant	55,772	29
	Codominant	23,100	12
	Occasional - Rare	111,015	57
	No Data	5,121	3
Stand Age	Older Mature	14,743	8
	Younger Mature	14,672	8
	Pre Reproductive	9,335	5
	No Data	156,258	80

Summary of Rapid Assessment Data in the LIT

The Rapid Assessment (RA) provides ground-truthed data on the presence and condition of longleaf pine stands where no similar data exists from other sources. Field data include attributes for canopy, midstory and ground layers that were collected by surveyors trained on the LEO project protocols.

Total longleaf pine acres within
RA Sites: **39,785**

Survey status of potential longleaf pine sites delineated for Rapid Assessment.

RA Survey Status	Number of Sites	Acres
Longleaf Present	599	39,785
Longleaf Absent	265	15,522
No access ^a	144	8,919
Unvisited ^b	874	49,888

^asurveys attempted but sites could not be accessed by road

^bunvisited, in areas of lower partner priority or outlying areas; still available for supplemental data collection

Stand attributes from Rapid Assessments of longleaf pine in the LIT. Maintain and Improve conditions are primarily derived from America's Longleaf Restoration Initiative's Longleaf Pine Maintenance Condition Class Definitions.

Condition Attribute	Maintain (Acres)	Maintain (%)	Improve (Acres)	Improve (%)	No Data (Acres)	No Data (%)
Flat-tops	11,865	30	26,667	67	1,254	3
Large Longleaf	19,216	48	19,063	48	1,506	4
Longleaf Stand Age	14,667	37	23,872	60	1,247	3
Longleaf Canopy Age Classes	16,311	41	21,967	55	1,506	4
Longleaf Pine Regeneration	5,746	14	32,785	82	1,254	3
Longleaf Pine Saplings	10,437	26	28,094	71	1,254	3
Longleaf Pine Basal Area	19,216	48	19,063	48	1,506	4
Hardwood Canopy Basal Area	33,303	84	5,224	13	1,258	3
Midstory Cover	23,120	58	15,457	39	1,207	3
Fire Tolerant Hardwoods Cover	29,001	73	9,530*	24	1,254	3
Tall Shrub Cover	17,222	43	21,356	54	1,207	3
Short Shrub Cover	20,902	53	17,629	44	1,254	3
Herbaceous Cover	16,647	42	21,885	55	1,254	3
Pyrogenic Grass Cover	16,842	42	21,689	55	1,254	3
Non-native Grass Cover	27,364	69	10,915*	27	1,506	4
Invasive Plant Cover	38,180	96	398	1	1,207	3

*data includes both improve and restore condition classes

Fire evidence observed on Rapid Assessment Sites with longleaf pine.

Fire Evidence Category	Acres	%
Frequent	11,376	29
Recent, not frequent	3,348	8
Infrequent	23,428	59
No evidence	690	2
No data	943	2

Condition rank assigned by surveyor for Rapid Assessment Sites with longleaf pine.

Condition Rank	Acres	%
Excellent	6,033	15
Good	8,119	20
Fair	17,641	44
Low	6,785	17
No Data	1,207	3