

SE LEO Interactive Map Tools and Tips

Jump to page below or scroll document

[Zoom](#)

[Pan](#)

[Identify](#)

[Layer Descriptions](#)

[Condition Attributes](#)



If the 'More' button is visible, click it to display all tools available in the header bar. Tool display will depend on screen size.



[Search](#)



[Legend](#)



[Bookmark](#)



[Filter](#)



[Working with Layers](#)



[Basemap](#)



[Add Data](#)



[Print](#)



[Summarize](#)



[Dashboard](#)

Working with the Map - Quick Tips

Zoom

Use + or – buttons.

Scroll with mouse wheel.

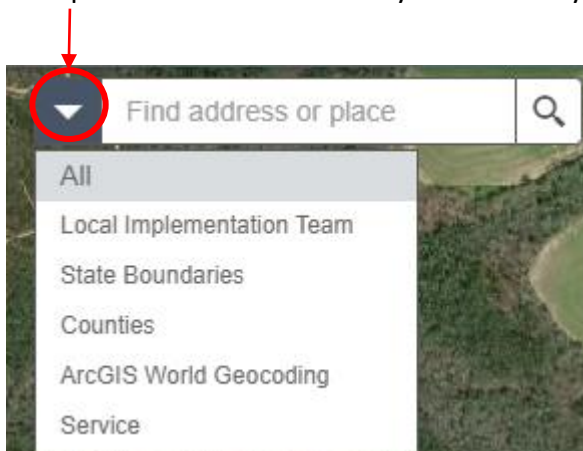
Hold Shift and drag a box over area of interest.

Pan

Hold down mouse wheel
and drag mouse.

Search

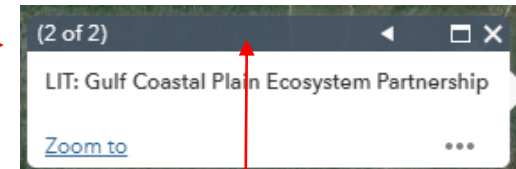
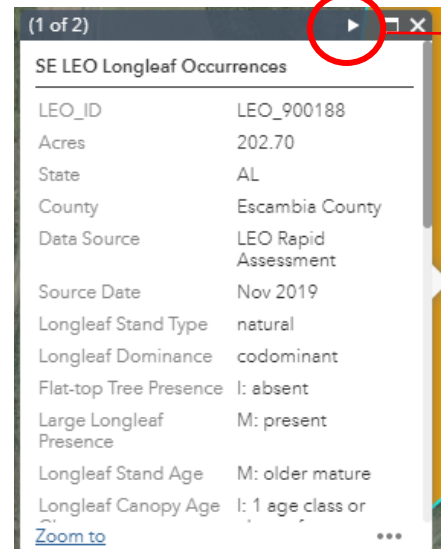
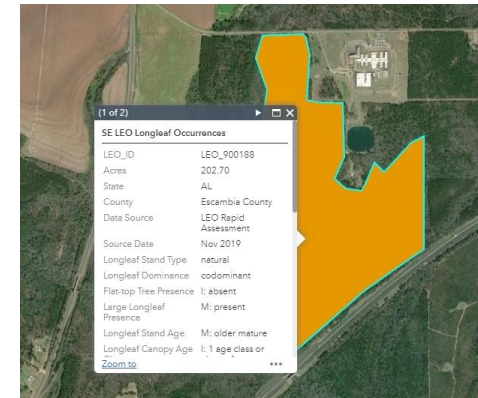
Search by typing an address; or click the
dropdown arrow to search by reference layer.



Identify

Click a feature on the map to
display pop-up information.

Click the small arrow to view
info for other features at that
location.



Click and drag on the gray header
to move the pop-up box.

Map Layers



Click the Layer List button to display available layers.

Working with Layers

Check boxes to toggle layer visibility.

Click small arrow to left of check box to view layer legend.

Click the 3 dots to right of layer name for more options.

Use scroll bars on far right to see all layers in the list.

Layer Organization

Base Layers include several views of longleaf occurrences plus reference layers.

Condition Layers include views of 19 LEO condition attributes.

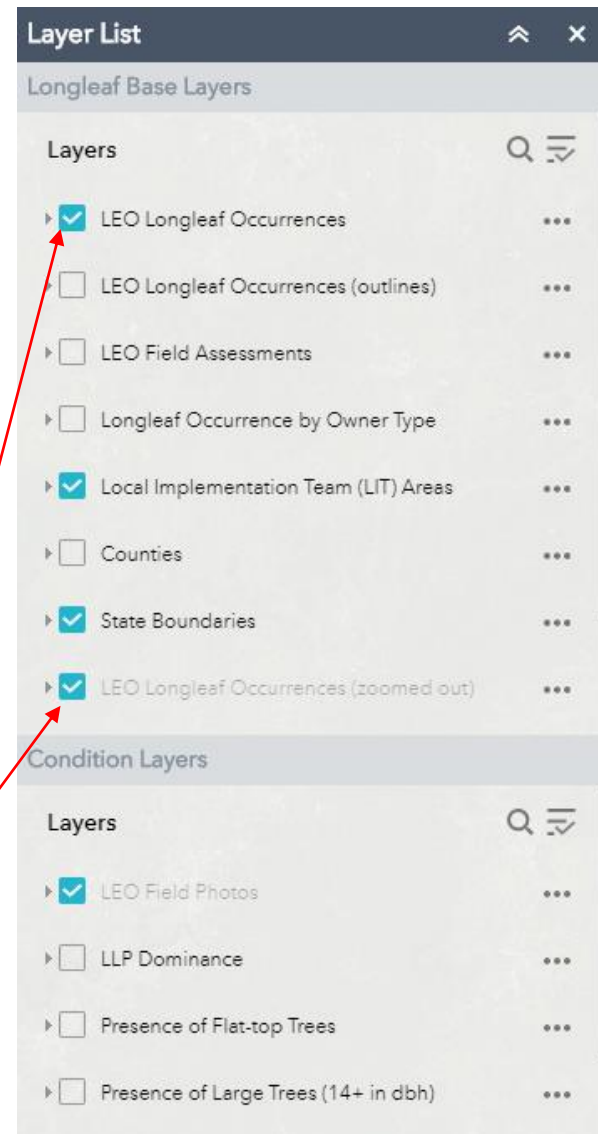
Why Can't I see the Layer?

The order of layers in the layer list is also the order that they draw on the map. Any visible longleaf layer will obscure layers beneath it.

Eg, to view Condition Layers, turn off Longleaf Occurrence Layers.

A grayed out layer indicates that it is not visible at the current zoom level.

Eg, there are two versions of 'LEO Longleaf Occurrences' to improve performance of the map, with each being visible at different scales.



Map Tools



Legend

Toggle legend for visible map layers.



Bookmark

Create a Bookmark to name and save your current map view.

Click on a saved bookmark to return to that map view.



Basemap

Change background to view streets or topography.



Print

Print map to save as pdf or jpg.

Click 'Advanced' for set up options.

The screenshot shows the 'Print' dialog box with the 'Advanced' settings panel open. The main dialog has fields for 'Map title' (SE Longleaf Ecosystem Occurrence), 'Layout' (Letter ANSI A Portrait), and 'Format' (PDF). Below these are 'Advanced' and 'Print' buttons. The 'Advanced' panel contains the following settings:

- Map scale/extent:**
 - Preserve: ☒ map scale, ☐ map extent
 - Force scale: (with a 'current' link below it)
- Output spatial reference WKID :**
 - 102100
 - WGS_1984_Web_Mercator_Auxiliary_Sphere
- Layout metadata:**
 - Author: LEO Web Map
 - Copyright: SE LEO Project Partners: NRCS, FNAI, LLA
- Include legend:** ☒
- Scale bar unit:** Miles
- MAP_ONLY size:**
 - Width (px): 670
 - Height (px): 500
- Print quality:**
 - DPI: 300
- Feature attributes:**
 - Include attributes: ☐



Add Data

Add data from ArcGIS Online or upload your own map file.

Add Data

Search for layers in ArcGIS Online.

The 'Add Data' dialog box has a dark header with the title 'Add Data' and expand/collapse icons. Below the header are three tabs: 'Search' (selected), 'URL', and 'File'. Under the 'Search' tab, there is a dropdown menu set to 'ArcGIS Online', a search input field with the placeholder 'Search...', and a search icon. Below this is a toggle switch labeled 'Within map...' which is turned on. To the right of the toggle are two dropdown menus labeled 'Type' and 'Relevance'. The main area displays a list of search results:

Thumbnail	Layer Name	Source	Actions
	USA NAIP Imagery: Natural Color	Image Service by esri	ADD DETAILS
	Terrain	Image Service by esri	ADD DETAILS
	Sentinel-2 Views	Image Service by esri	ADD DETAILS

Add one of the file formats shown below. Note that shapefiles must be zipped to upload. Small files work best.

The 'Add Data' dialog box has the 'File' tab selected. It features a checkbox labeled 'Generalize features for web display' which is checked. Below this is a large dashed box containing icons for supported file formats: 'SHAPE FILE' (orange), 'CSV' (green), 'KML' (blue), 'GPX' (light blue), and 'Geo JSON' (grey). Below the icons is the text 'DROP OR BROWSE' and a dark 'BROWSE' button. A help icon (?) is in the top right corner of the dashed box.

Added data layer will show up in the Layer List.

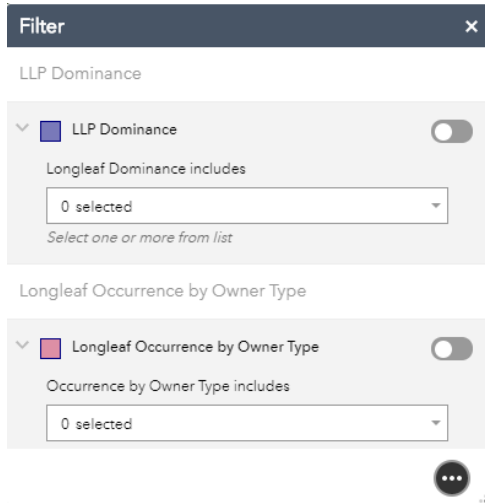


[BACK TO CONTENTS](#)

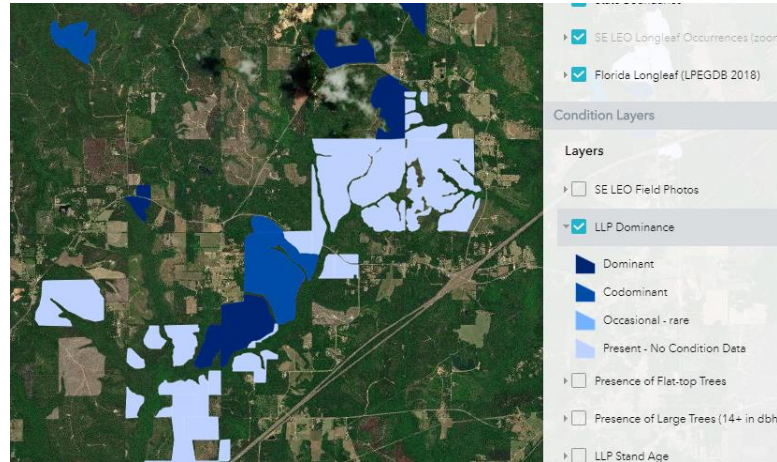


Filter

Filtering allows you to view a subset of the data based on attributes of one of more layers. By default, two attributes are available for filtering: LLP Dominance and LLP Occurrence by Owner Type. You can also create your own filter.



Without filter applied

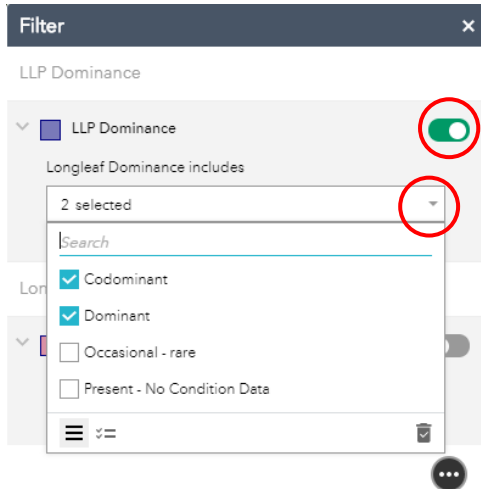


Note: Make sure filter layer(s) is visible.

See Layer List.



Select attributes from menu then apply filter

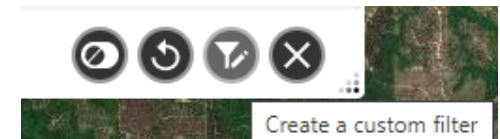


With LLP Dominance filter applied



Create a Custom Filter

Click the 'options' button to access a window for creating your own filter



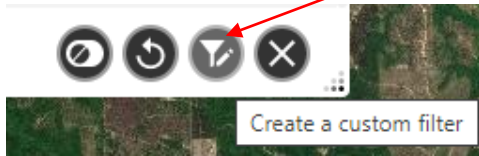
SEE NEXT PAGE FOR INSTRUCTIONS



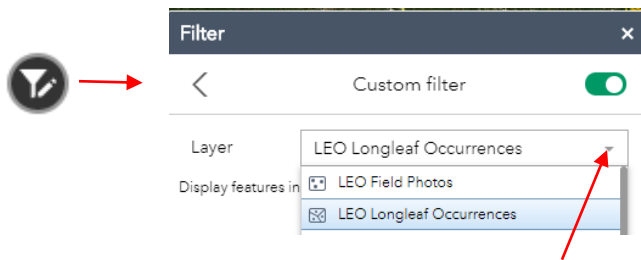
Filter (continued)

Create a Custom Filter

1. Click the 'options' button to access the custom filter button



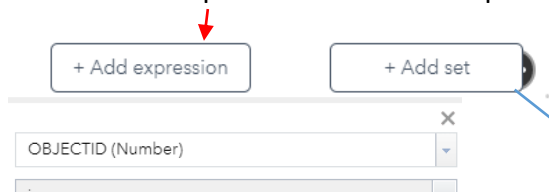
2. Click the custom filter button to open the Custom Filter dialog window.



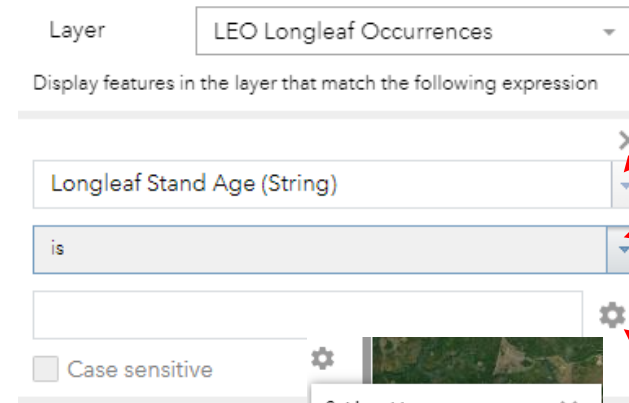
3. Select a layer to filter from the Layer menu. (Layer must be visible in the map)

Note: For large geographic areas (state level and larger) create your filter(s) within the condition layers; for smaller geographic areas, you may create filter(s) within the LEO Longleaf Occurrences layer.

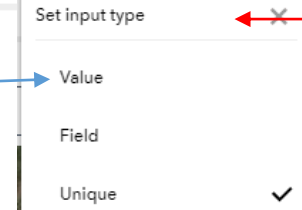
4. Click + Add Expression to start set up for the filter.



The expression window will automatically fill in with OBJECTID. You will change this in the next step.



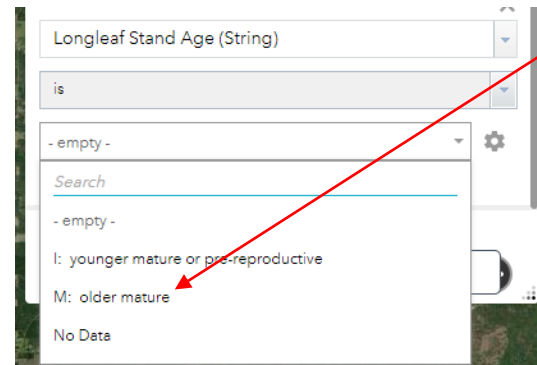
Choose 'Value' for a numeric field such as Acres and type in a number, e.g. Acres is greater than 1000



5. Select an attribute to filter from the menu.

6. Select an operator from the menu. Note that 'is' acts like '='.

7. Click the Settings button to select the input type. Select Unique for a list of values.



8. The expression window now lets you choose a value to filter on.

The filter is immediately applied to the map.

Note: 'Add set' allows the combination of expressions.

E.g., Longleaf Stand Age is M: older mature AND Acres is greater than 1000.



Summarize

Summarize longleaf acreage within an area of interest.

1. Draw an area of interest on-screen, or use the select tool to select a county* as the area of interest.

Summarize

Area of Interest (limit of 2000 LEO stands in area)

Draw Shapefile

Select draw mode

3 drawing tools

Buffer distance (optional)

Show results within

0 Miles

Report Start Over

Select tool*

*For county selection, summarize will only work for counties with <2000 LLP sites.

Example: Area of Interest with draw rectangle tool



2. Click **Report**

Results will be condensed to show total acres and number of sites

Summarize

Report

Back Area : 20,862.47 acres

Longleaf Sites (19)

Click the 'plus' box and scroll to see attribute details for each site.

Summarize

Report

Back Area : 20,862.47 acres

Longleaf Sites (19)

LEO_ID: LEO_900103
 Acres: 459.82
 State: AL
 County: Baldwin County
 Owner Type: Private - Unprotected
 LIT: Gulf Coastal Plain Ecosystem Partnership
 Data Source: LEO Rapid Assessment
 Longleaf Dominance: Dominant
 Flat-top Tree Presence: M: present
 Large Longleaf Presence: M: present

Summarize by Attribute

From the report window click the Settings button next to 'Longleaf Sites' to open a list of attributes.

Longleaf Sites (19)

Select an attribute(s) to summarize.

Longleaf Sites

Select fields

☐ Select All

☐ LEO_ID ☐ Acres

☐ County ☐ Owner Type

☐ Data Source ☒ Longleaf Dominance

☐ Large Longleaf Pres... ☐ Longleaf Stand Age

☐ Longleaf Basal Area ☐ Longleaf Regenerat...

Results show acres by attributes, summed for all sites in the area of interest.

Longleaf Sites (19)

Longleaf Dominance:	Dominant	Area: 1,572.26 acres
Longleaf Dominance:	Present - No Condition Data	Area: 386.77 acres
Longleaf Dominance:	Occasional - rare	Area: 235.12 acres



Dashboard Click the Dashboard button on the webmap to open the LEO Dashboard.



Interact with the dashboard to view acreage summaries by LIT or state. See Dashboard Tips in the middle of the screen.



Map Layer Descriptions

Longleaf Base Layers

LEO Longleaf Occurrences: Stands/polygons where the occurrence of longleaf pine has been confirmed from existing partner data sources or LEO field surveys. The LEO data currently excludes Florida.

LEO Field Assessments – LLP Observed: LEO Longleaf Occurrences (see description above) with legend to show sites where LEO Rapid Assessment field surveys have occurred; all other sites are from existing partner data sources.

LEO Field Assessments – LLP Not Observed: Sites where LEO Rapid Assessment field surveys indicate that longleaf pine is absent or longleaf pine occurrence remains unknown (site not accessible).

Longleaf Occurrence by Owner Type: LEO Longleaf Occurrences (see description above) with legend to show general owner type.

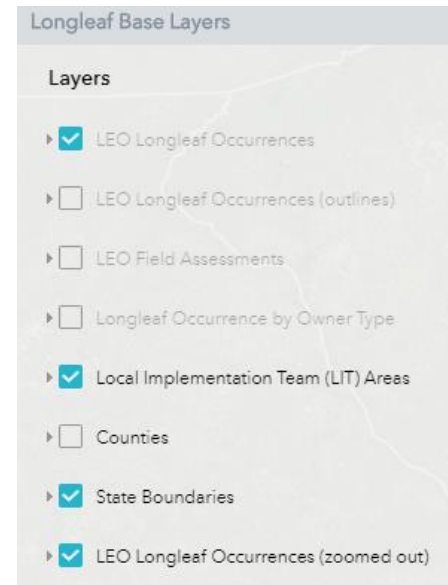
Local Implementation Team (LIT) Areas: Boundaries that represent partnership working landscapes for longleaf pine. These teams are typically centered on Significant Geographic Areas or Significant Sites identified in the Range-Wide Conservation Plan for Longleaf Pine. Source: The Longleaf Alliance

LEO Longleaf Occurrences (zoomed out): LEO Longleaf Occurrences (see description above) configured for efficient display when zoomed out to state level or beyond.

Condition Layers

LEO Field Photos: Photo points optionally collected during LEO Rapid Assessment field surveys.

The [Condition Layers](#) that follow field photos display 19 condition attributes of the LEO Longleaf Occurrences. See [Condition Attributes](#) in the next section.



Note: grayed out layers become available to display when zoomed in closer than the state level.



[BACK TO CONTENTS](#)

Condition Attributes

Original values for all attributes below were crosswalked into ALRI management categories for Maintain, Improve or Restore. Note that 'Restore' thresholds are not identified for most attributes. Thresholds for maintain or improve are indicated by 'M' or 'I', respectively, in the database. The crosswalk scheme is described in the LEO GDB v1 Final Report, available for download on the [LEO project webpage](#).

Attribute Name	Description
LLP Dominance	Indicates dominance of longleaf pine in the stand relative to other tree species.
Presence of Flat-top Trees	Indicates the presence and abundance of flat-topped trees observed within the stand.
Presence of Large Trees (14+ dbh)	Indicates the presence and abundance of large trees observed within the stand.
LLP Stand Age	Predominant longleaf age class for the stand.
LLP Age Classes in Canopy	Indicates the number of age classes of mature longleaf pine present in the canopy and sub-canopy. Excludes LLP Regeneration and LLP Saplings which are captured separately.
LLP Total BA	Estimated basal area of all longleaf pines > 5" dbh for the entire stand rounded to the nearest ten.
LLP Regeneration	Estimated cover of longleaf pine regeneration from grass stage to 2" dbh.
LLP Saplings	Estimated cover of longleaf pine saplings from > 2" to < 5" dbh in the stand.
Other Pine BA	Estimated basal area in square feet per acre of other pines (not LLP) with dbh > 5" for the entire stand rounded to the nearest ten.
Hardwood Canopy BA	Estimated basal area in square feet per acre of canopy hardwoods with dbh > 5" for the entire stand rounded to the nearest ten.
Midstory Cover	Percentage of the ground within the stand covered by all woody plants other than LLP that are greater than 10 feet tall and that were not counted in the canopy (< 5" dbh).
Midstory Fire Tolerant Hardwood Cover	Percentage of the ground within the stand covered by fire tolerant hardwoods such as turkey oak, sand post oak, bluejack oak, blackjack oak, black oak, post oak, southern red oak, black hickory and flowering dogwood within the Midstory.
Tall Shrub Cover	Percentage of the ground within the stand covered by woody plants other than LLP that are 3 – 10 feet tall.
Short Shrub Cover	Percentage of the ground within the stand covered by woody plants other than LLP that are <3 feet tall.
Native Herbaceous Cover	Percent cover of all native non-woody, soft-tissued plants regardless of height, including non-woody vines, legumes, and graminoids (grasses, sedges, rushes); does not include non-native pasture grasses.

Condition Attributes (continued)

Attribute Name	Description
Native Pyrogenic Graminoid Cover	Percent cover of native perennial graminoids that are maintained by periodic fire.
Non-native Herbaceous Cover	Percent cover of non-native herbaceous species, often grasses, are indicators of fallow agriculture or planted pastures.
Invasive Plant Cover	Percent cover of invasive exotic plants (woody and herbaceous) within the stand. Refer to “A Field Guide for the Identification of Invasive Plants in Southern Forests” by James Miller 2010
Surveyor Rank	The field surveyor’s impression of the ecological condition of the vegetation relative to an undisturbed, well-maintained natural system.
