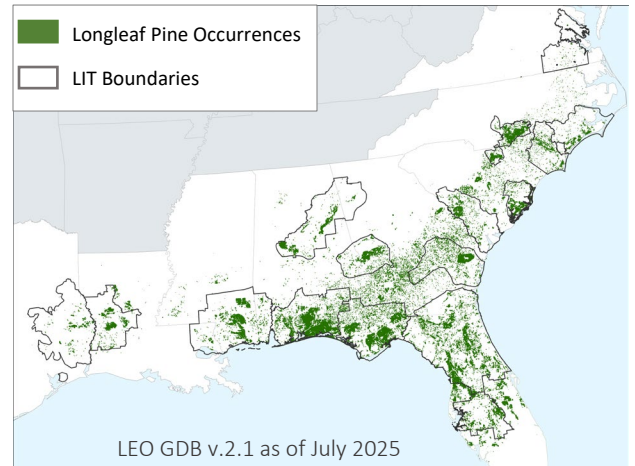
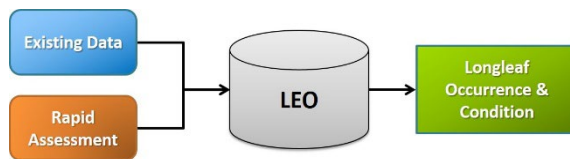




Purpose The LEO GDB is a central source for mapped longleaf on public and private lands that will enable partners to prioritize and monitor progress toward conservation and restoration goals; track longleaf acres and condition through time; view and analyze a map of longleaf pine occurrence and condition at multiple scales.

Method The LEO GDB integrates existing partner data and new Rapid Assessment field data into a single map.



The LEO GDB v2.1 represents minor but important updates in under-represented areas such as Virginia and SE Louisiana. It also incorporates

updated data from the Florida Longleaf Pine Ecosystem Geodatabase (LPEGDB) v.5. Currently not included are longleaf acres on public and private conservation lands that lack spatial stand-level data; and longleaf from many state and federal cost share programs for which data are currently unavailable.

Results

5.06 million ac of longleaf documented

77% longleaf dominant or codominant; 12% longleaf occasional-rare; 11% presence only

101 partner datasets, mostly federal and state

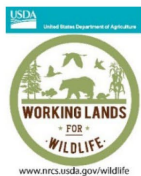
>1.8 million ac from Rapid Assessments, mostly on private land

Acres of longleaf pine in the LEO GDB by owner type.

Owner Type	Acres	%
Federal	1,876,419	37
State	1,042,985	21
Local	63,967	1
Private Conservation Land	89,594	2
Private Conservation Easement	214,079	4
Private - Unprotected	1,711,055	34
Other	12,593	<1
Total	5,010,692*	100

*table total excludes ca 50k acres of restricted data

Partners The LEO project is conducted by Florida Natural Areas Inventory and the Longleaf Alliance with assistance from America's Longleaf Restoration Initiative-Longleaf Partnership Council and contributions of many partners. Funding is currently provided by the National Fish and Wildlife Foundation's Longleaf Landscape Stewardship Fund. Previous funding was provided by USDA-NRCS through the U.S. Endowment for Forestry and Communities. The Florida longleaf project was supported by the Florida Forest Service through a grant from USDA-USFS.



For more information about the LEO project please visit our website:

<https://www.fnai.org/species-communities/southeast-longleaf>