

BLUE CALAMINTHA BEE

Osmia calaminthae

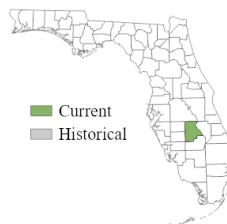
Order: Hymenoptera

Family: Megachilidae

FNAI Ranks: G1/S1

U.S. Status: none

FL Status: none



Description: One centimeter long dark blue bee with white to pale golden hairs and brown wings.

Similar Species: *Osmia albiventris*, *O. cordata*, and *O. sandhouseae*

Habitat: Rosemary scrub, including disturbed sites such as vacant lots, that have Ashe's calamint, *Calamintha ashei*.

Seasonal Occurrence: Adults are active from mid-March through the end of April.

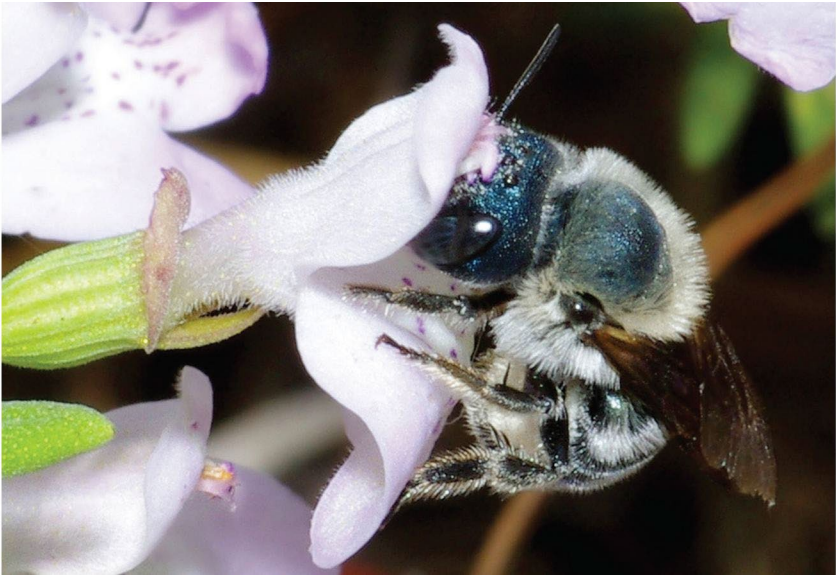
Florida Distribution: This species is only known from a small area in Highlands County near Lake Placid.

Range-wide Distribution: Very small area near Lake Placid in Highlands County.

Conservation Status: This species is only known from four localities on the southernmost Lake Wales Ridge in a very small geographic area. It is a specialist on a rare plant, Ashe's calamint.

Protection and Management: Not enough is known about this species' life history to make specific management recommendations, but areas where this bee is found should be managed for Ashe's calamint.

References: Rightmyer et al. 2011



© Tim Lethbridge