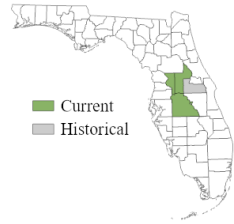


## PYGMY ANOMALA SCARAB BEETLE

*Anomala exigua*



**Order:** Coleoptera  
**Family:** Scarabaeidae  
**FNAI Ranks:** G1/S1  
**U.S. Status:** none  
**FL Status:** none

**Description:** This is a 4-5 mm long scarab beetle with males being variable in color pattern and flightless female variability unknown (Skelley and Morris 2001).

**Similar Species:** Many other small beetles may look superficially similar to a layperson. Within the genus, the only other species that lack external protibial teeth is *Anomala eximia*, which is larger and has a solid black pronotum (Skelley and Morris 2001).

**Habitat:** This species is found in sandhill habitat with patches of open sand and many times in association with gopher apple (*Geobalanus oblongifolius*).

**Seasonal Occurrence:** Males are active from late March to early June (Skelley and Morris 2001).

**Florida Distribution:** Now known from four sites in Lake and Polk counties, Florida, USA; historically from Orange County.

**Range-wide Distribution:** Now known from four sites in Lake and Polk counties, Florida, USA; historically from Orange County.

**Conservation Status:** This species was considered most likely extinct until Paul E. Skelley and Roy F. Morris (2001) rediscovered it. There are only four known modern occurrences in Lake and Polk counties, Florida, USA, with only one of these on a managed area and so the other three are threatened by development. It is restricted to open sandhill habitat in a limited range. Females are flightless and so the species probably has poor dispersal abilities.

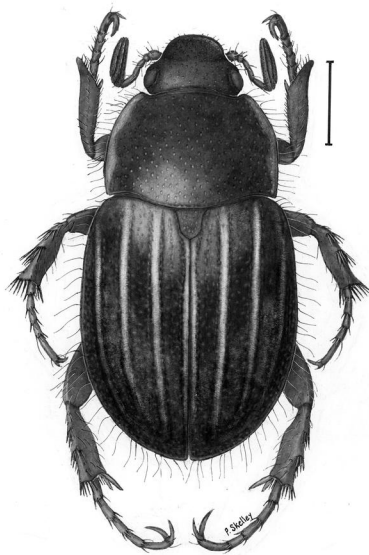
**Protection and Management:** Manage occurrences for open patches of bare sand and gopher apple (*Geobalanus oblongifolius*), as it is often found in association with

**Pygmy Anomala Scarab Beetle**

*Anomala exigua*

this plant.

**References:** Skelley and Morris 2001



© Paul E. Skelley, FSCA