

Anredera vesicaria

TEXAS MADEIRAVINE

Basellaceae

Common Synonyms: *none*

FLEPPC Category: -

FDACS Listed Noxious Weed: No

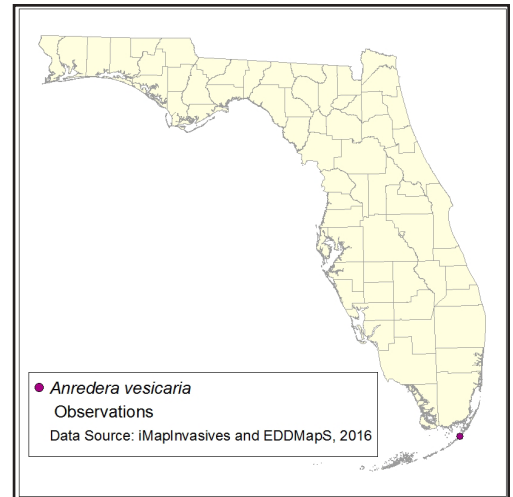
IFAS Assessment

North	OK
Central	OK
South	OK

USDA Hardiness Zone: not available

Growth Habit: Vine

Origin: Tropical America



Dan Clark, USDI National Park Service, Bugwood.org

Description: Twining vine with stems to 8 m long. Leaves simple, ovate to elliptic, 2-16 cm long. Tiny white fragrant flowers clustered on branched panicles or racemes, 3-35 cm long. Fruits ovoid, 1-1.4 mm.

Habitat: disturbed hammocks

Comments: Cultivated for its showy and fragrant flowers.

Florida Introduction Date: Earliest Florida specimen vouchered in 1964.

Control Methods:

No specific recommendations available

Useful Resources:

Flora of North America Editorial Committee, eds. 1993+. Flora of North America North of Mexico. 16+ vols. New York and Oxford.

Wunderlin, R. P., and B. F. Hansen. 2008. Atlas of Florida Vascular Plants (<http://florida.plantatlas.usf.edu/>). [S. M. Landry and K. N. Campbell (application development), Florida Center for Community Design and Research.] Institute for Systematic Botany, University of South Florida, Tampa.