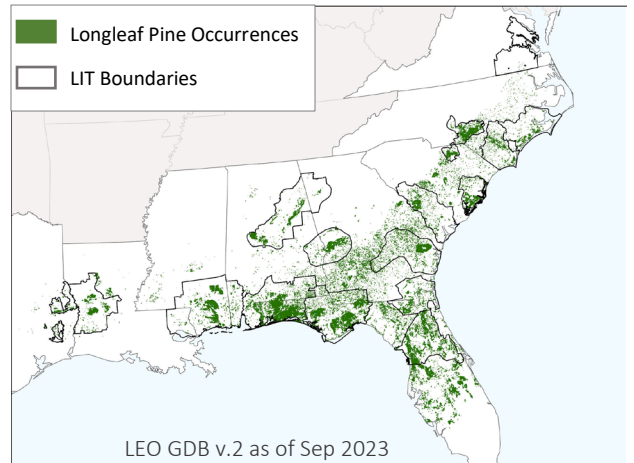
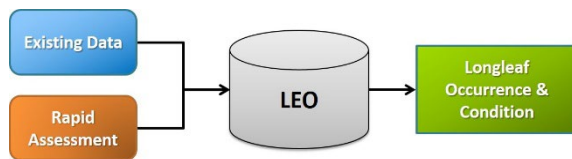




Purpose The LEO GDB is a central source for mapped longleaf on public and private lands that will enable partners to prioritize and monitor progress toward conservation and restoration goals; track longleaf acres and condition through time; view and analyze a map of longleaf pine occurrence and condition at multiple scales.

Method The LEO GDB integrates existing partner data and new Rapid Assessment field data into a single map.



The LEO GDB v2 represents the completion of LEO Phase 2 which includes new Rapid Assessment (RA) field data in strategic locations outside of Local Implementation Team (LIT) areas, as well as Phase 1 RA data within LITs, the Florida longleaf database, and partner data range wide. Currently not included are longleaf acres on public and private conservation lands that lack spatial stand-level data; and longleaf from many state and federal cost share programs for which data are currently unavailable.

Results

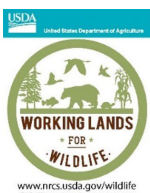
- 4.98 million ac of longleaf documented
- 74% longleaf dominant or codominant; 12% longleaf occasional-rare; 13% presence only
- 78 partner datasets, mostly federal and state
- >1.8 million ac from Rapid Assessments, mostly on private land

Acres of longleaf pine in the LEO GDB by owner type.

Owner Type	Acres	%
Federal	1,814,003	37
State	1,022,390	21
Local	45,388	<1
Private Conservation Land	79,427	2
Private Conservation Easement	105,841	2
Private - Unprotected	1,860,511	38
Other	517	<1
Total	4,928,076*	100

*table total excludes ca 50k acres of restricted data

Partners The LEO project is conducted by Florida Natural Areas Inventory and the Longleaf Alliance with assistance from America’s Longleaf Restoration Initiative-Longleaf Partnership Council and contributions of many partners. Funding is provided by USDA-NRCS through the U.S. Endowment for Forestry and Communities. The Florida longleaf project was supported by the Florida Forest Service through a grant from USDA-USFS.



For more information about the LEO project please visit our website:

<https://www.fnai.org/species-communities/southeast-longleaf>